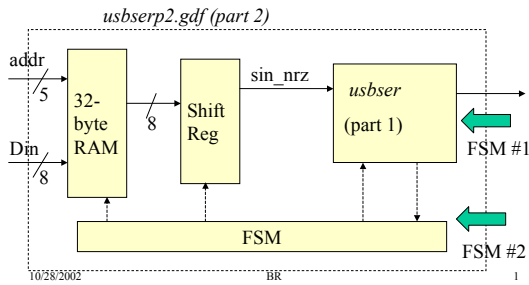


Cooperating Finite State Machines

- In the Serial data transfer lab, there is more than one FSM

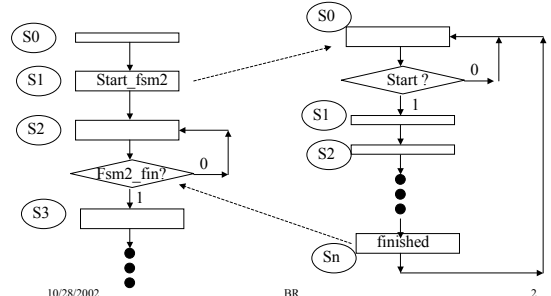


10/28/2002

1

Coordinating FSM Actions

- Must use handshaking lines to coordinate FSM actions

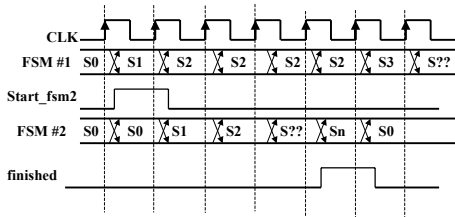


10/28/2002

BR

2

Timing of Two FSMs



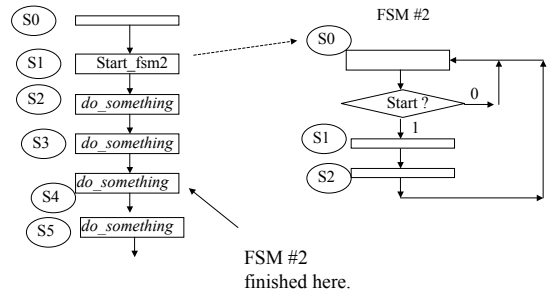
10/28/2002

BR

3

Other Options

- Do not need 'finish' handshake line if the number of clock cycles of operation is known.

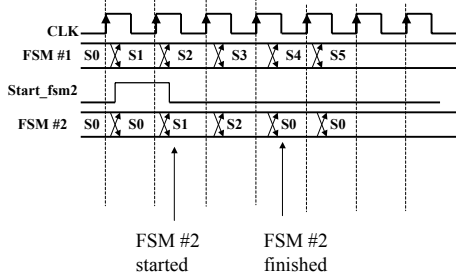


10/28/2002

BR

4

Timing of Two FSMs



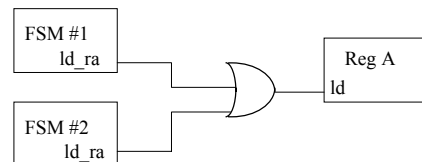
10/28/2002

BR

5

Controlling Data Path Components

If more than one FSM controls a datapath component, then have to OR their output lines



10/28/2002

BR

6

Mux Controls

